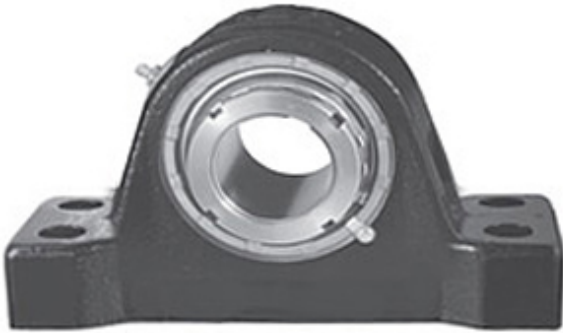




# KOYO BEARING LIMITED

4.438 Inch | 112.725 Millimeter x 10.125 Inch |  
 257.175 Millimeter x 6.125 Inch | 155.575  
 Millimeter REXNORD AMP9407F Pillow Block  
 Bearings



Bearing No. AMP9407F

AMP9407F Bearing 2D drawings and 3D CAD models

Category	Pillow Block Bearings
Inventory	0.0
Manufacturer Name	REXNORD
Minimum Buy Quantity	N/A
Weight	89.892
EAN	0698210002466
Product Group	M06288
Number of Mounting Holes	4
Mounting Method	Tapered Adapter Sleeve
Housing Style	4 Bolt Pillow Block
Rolling Element	Spherical Roller Bearing
Housing Material	Cast Iron
Expansion / Non-expansion	Non-expansion
Mounting Bolts	1-1/8 Inch
Relubricatable	Yes
Insert Part Number	9407U
Seals	Heavy Contact
Housing Configuration	1 Piece Solid
Inch - Metric	Inch
Other Features	Double Row   Two Open Auxiliary End Cap
Long Description	4 Bolt Pillow Block; 4-7/16" Bore; 6-1/8" Base to Center Height; Tapered Adapter Sleeve Mount; Spherical



## KOYO BEARING LIMITED

	Roller Bearing; Relubricatable; Cast Iron; Heavy Contact; Non- expansion
Category	Pillow Block
UNSPSC	31171511
Harmonized Tariff Code	8483.20.40.80
Noun	Bearing
Keyword String	Pillow Block
Manufacturer URL	<a href="http://www.rexnord.com">http://www.rexnord.com</a>
Manufacturer Item Number	AMP9407F
Manufacturer Internal Number	6800246
Weight / LBS	168
Bolt Spacing Maximum	0 Inch   0Millimeter
Actual Bolt Center to Center	16 Inch   406.4Millimeter
D	10.125 Inch   257.175 Millimeter
d	4.438 Inch   112.725 Millimeter
Nominal Bolt Center to Center	16 Inch   406.4 Millimeter
Bolt Spacing Minimum	0 Inch   0Millimeter
B	6.125 Inch   155.575 Millimeter