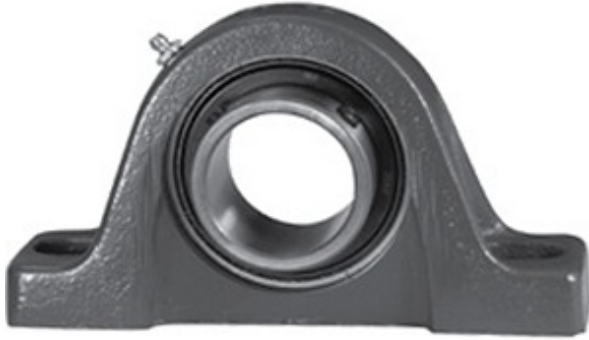




KOYO BEARING LIMITED

0.688 Inch | 17.475 Millimeter x 0.984 Inch | 25 Millimeter x 1.063 Inch | 27 Millimeter LINK BELT PL3S211E Pillow Block Bearings



Bearing No. PL3S211E

PL3S211E Bearing 2D drawings and 3D CAD models

Category	Pillow Block Bearings
Inventory	0.0
Manufacturer Name	REXNORD
Minimum Buy Quantity	N/A
Weight	0.45
EAN	0662864011471
Product Group	M06110
Number of Mounting Holes	2
Mounting Method	Set Screw
Housing Style	2 Bolt Pillow Block
Rolling Element	Ball Bearing
Housing Material	Cast Iron
Expansion / Non-expansion	Non-expansion
Mounting Bolts	3/8 Inch
Relubricatable	Yes
Insert Part Number	MB25-1116-PA
Seals	Single Lip Contact
Housing Configuration	1 Piece Solid
Inch - Metric	Inch
Other Features	Single Row Standard Duty Has Flinger
Long Description	2 Bolt Pillow Block; 11/16" Bore; 1-1/16" Base to Center Height; Set Screw Mount; Ball Bearing; 3-1/8" Minimum Bolt Spacing;



KOYO BEARING LIMITED

	4-1/8" Bolt Spacing Maximum; Relubricatable; Cast Iron;
Category	Pillow Block
UNSPSC	31171511
Harmonized Tariff Code	8483.20.40.40
Noun	Bearing
Keyword String	Pillow Block
Manufacturer URL	http://www.rexnord.com
Manufacturer Item Number	CL25-1116
Manufacturer Internal Number	5804301
Weight / LBS	1
Bolt Spacing Minimum	3.125 Inch 79.375Millimeter
Actual Bolt Center to Center	0 Inch 0Millimeter
Bolt Spacing Maximum	4.125 Inch 104.775Millimeter
Nominal Bolt Center to Center	3.6 Inch 92 Millimeter
D	0.984 Inch 25 Millimeter
d	0.688 Inch 17.475 Millimeter
B	1.063 Inch 27 Millimeter